

Chattanooga Choo Choo

Harry Warren and Mack Gordon, 1941 and sung by the Andrews Sisters

INTRO: A7 D7 G D7
4 4 4 4

G C G
Pardon me boy, is that the Chattanooga Choo Choo?

D7 G D7
Track twenty nine, Boy you can gimme a shine

G C G
I can afford to board a Chattanooga Choo Choo

D7 G C G
I've got my fare and just a trifle to spare.

BRIDGE:

G7 C G7 C G7
You leave the Pennsylvania station 'bout a quarter to four

C G7 C G7
Read a maga--zine and then you're in Balti--more

F C A7
Dinner in the diner, nothing could be finer

D7 G7
Than to have your ham 'n' eggs in Caro--lina.

C G7 C G7
When you hear the whistle blowin' eight to the bar

C G7 C G7
Then you know that Tennessee is not very far

F C A7
Shovel all the coal in, gotta keep it rollin'

D7 G C
Woo, woo, Chattanooga, there you are

REPEAT CHORDS OF INTRO ONCE MORE

G C G
There's gonna be a certain party at the station

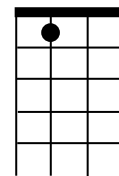
D7 G D7
Satin and lace, I used to call "Funny Face."

G C G Cm
She's gonna cry -- until I tell her that I'll never roam

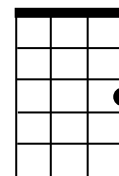
G D7 G
So Chattanooga choo choo--Won't you choo-choo me home?

D7 G
Won't you choo-choo me home?

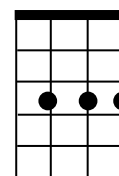
A7



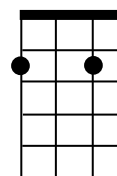
C



Cm

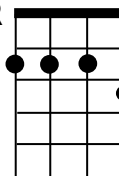


D7

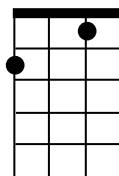


OR

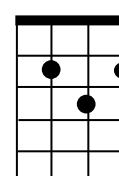
D7



F



G



G7

